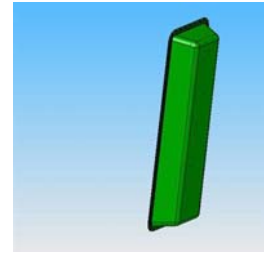


MT-243005/NVH

902-928 MHz 13dBi DP 90° Base Station Antenna



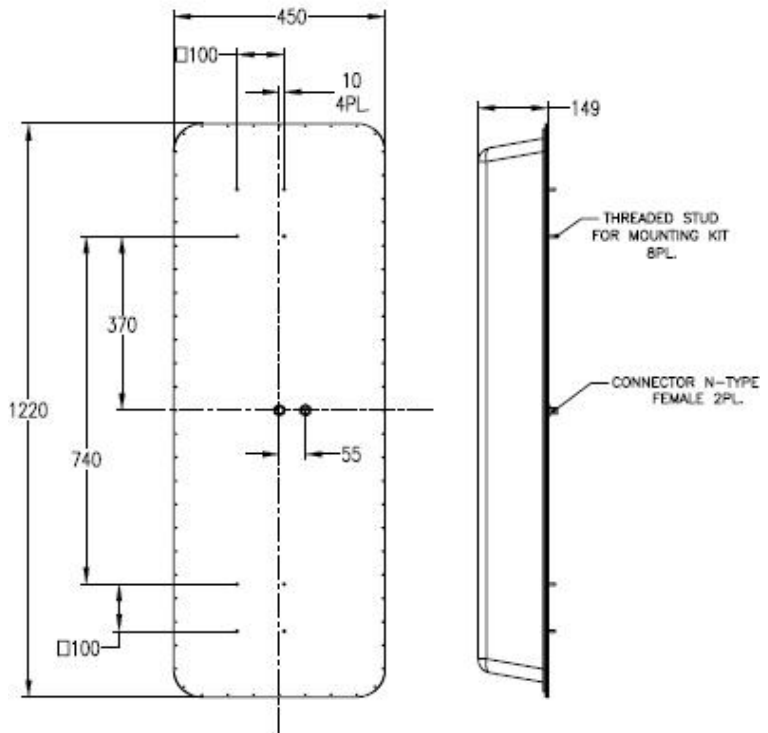
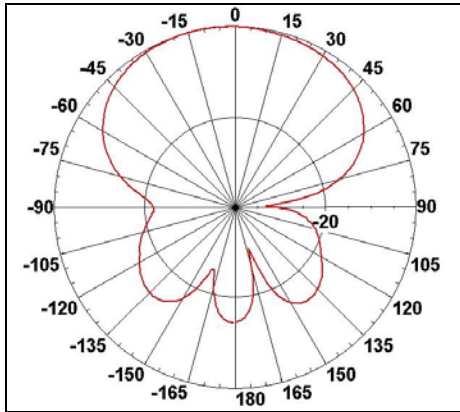
Specifications

MTI PART NUMBER		MT - 243004/NVH		
ELECTRICAL				
REGULATORY COMPLIANCE		RoHS, CE 0682		
FREQUENCY RANGE		902-928 MHz		
GAIN		Port V: 13 ± 0.5 dBi Port H: 12.5 ± 0.5 dBi		
VSWR		1.5 : 1 (max)		
AZIMUTH BEAMWIDTH		Port V : 90° (min) Port H: 87° (min)		
POLARIZATION		Linear Vertical & Horizontal		
ELEVATION BEAMWIDTH		16.5° (typ)		
CROSS POLARIZATION		Azimuth	-25 dB (max)	
		Elevation	-18 dB (max)	
PORT TO PORT ISOLATION		- 35 dB (max)		
F/B RATIO		Port V : -23 dB (max) Port H: -15 dB (max)		
INPUT IMPEDANCE		50 (ohm)		
INPUT POWER		6 W (max)		
LIGHTNING PROTECTION		DC Grounded		
MECHANICAL				
DIMENSIONS (LxWxD)		1220x450x145mm (max)		
WEIGHT		6 kg (max)		
CONNECTOR		2 x N - TYPE Female		
RADOME		Plastic		
BASE PLATE		Aluminum with chemical conversion coating		
OUTLINE DRAWING		See page 2		
MOUNTING KIT		MT-120021		
ENVIRONMENTAL				
TEST	STANDARD	DURATION	TEMPERATURE	NOTES
LOW TEMPERATURE	IEC 68-2-1	72 h	-55°C	-
HIGH TEMPERATURE	IEC 68-2-2	72 h	+71°C	-
TEMP. CYCLING	IEC 68-2-14	1 h	-45°C +70°C	3 Cycles
VIBRATION	IEC 60721-3-4	30 min/axis	-	Random 4M5
SHOCK MECHANICAL	IEC 60721-3-4	-	-	4M5
HUMIDITY	ETSI EN300-2-4 T4.1E	144 h	-	95%
WATER TIGHTNESS	IEC 529	-	-	IP54
SOLAR RADIATION	ASTM G53	1000 h	-	-
FLAMMABILITY	UL 94	-	-	Class HB
SALT SPRAY	IEC 68-2-11 Ka	500 h	-	-
ICE AND SNOW	-	-	-	25mm Radial
WIND SPEED SURVIVAL	-	-	-	220 Km/h
OPERATION	-	-	-	160 Km/h
WIND LOAD (SURVIVAL):	FRONT THRUST	-	-	156.8 kg
	SIDE THRUST	-	-	50.5 kg

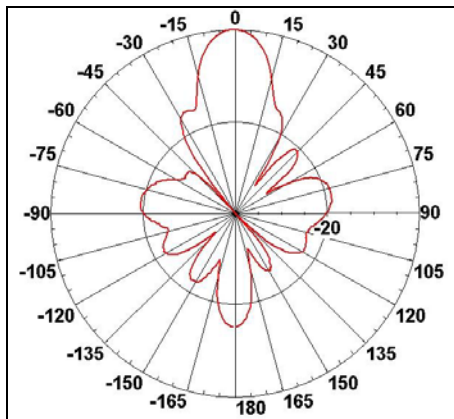
902-928 MHz 13dBi Dual Pol. 90° Base Station Antenna

Azimuth Radiation Pattern
 Midband Freq. 0.915 GHz

Dimensions [mm]



Elevation Radiation Pattern
 Midband Freq. 0.915 GHz



Existing Antenna Versions

MTI Wireless Edge is certified according to ISO 9001 and ISO 14001.

WAIVER!

While the information contained in this document has been carefully compiled to the best of our present knowledge, it is not intended as presentation or warranty of any kind on our part regarding the fitness of the products concerned for any particular use or purpose and neither shall any statement contained herein be construed as a recommendation to infringe any industrial property rights or as a license to use any such rights. The fitness of each product for any particular purpose must be checked beforehand with our specialists.

MTI Wireless Edge Ltd.

11 Hamelacha St.
 Afek Industrial Park
 Rosh Ha'ayin 48091, Israel
 Tel: +972-3-9008900
 Fax: +972-3-9008901
www.mtiwe.com