

## MT-344036/NV

# 2.3-2.7 GHz 16.5/15.5/14 dBi 60/90/120° Base Station Adjustable Antenna



### Specifications

MTI PART NUMBER		MT - 344036/NV		
<b>ELECTRICAL</b>				
REGULATORY COMPLIANCE	ETSI EN 301 326-3 V1.1.2 (2006-03) RoHS, CE 0682			
FREQUENCY RANGE	2.3-2.7 GHz			
GAIN	60°	90°	120°	
	16.5dBi (min)@ 2.3-2.6G	15.5dBi (min)@ 2.3-2.6G	14dBi (min) @ 2.3-2.6G	
	17.5dBi (min)@ 2.6-2.7G	16dBi (min) @ 2.6-2.7G	15dBi (min) @ 2.6-2.7G	
VSWR	1:7:1 (max)			
AZIMUTH 3 dB BEAMWIDTH	60° ± 5 @ 2.3-2.6 GHz	90° ± 10 @ 2.3-2.7 GHz	120° ± 12 @ 2.3-2.7 GHz	
AZIMUTH 4 dB BEAMWIDTH	60° ± 5 @ 2.6-2.7 GHz			
ELEVATION 3 dB BEAMWIDTH	7° (typ)			
ELEVATION BEAMWIDTH	8.5° (typ)			
POLARIZATION	Linear Vertical			
SIDELOBES LEVEL	ETSI EN 301 326-3 V1.1.2 SS			
CROSS POLARIZATION	ETSI EN 301 326-3 V1.1.2 SS			
F/B RATIO	ETSI EN 301 326-3 V1.1.2 SS			
INPUT IMPEDANCE	50 (ohm)			
INPUT POWER	20 W (max)			
LIGHTNING PROTECTION	DC Grounded			
<b>MECHANICAL</b>				
DIMENSIONS (LxWxD)	904.5X130X110mm(max)	904.5X130X98mm(max)	904.5X130X78mm(max)	
WEIGHT	2.3 kg (max)			
CONNECTOR	N - Type Female			
RADOME	Plastic			
BASE PLATE	Aluminum with chemical conversion coating			
OUTLINE DRAWING	The Antenna has 3 Beamwidth that are achieved by flaps mounted on 2 sides of the antenna, see outline drawing page 2.			
MOUNTING KIT	MT-120021/A			
<b>ENVIRONMENTAL</b>				
TEST	STANDARD	DURATION	TEMPERATURE	NOTES
LOW TEMPERATURE	IEC 68-2-1	72 h	-55°C	-
HIGH TEMPERATURE	IEC 68-2-2	72 h	+71°C	-
TEMP. CYCLE	IEC 68-2-14	1 h	-45°C +70°C	3 Cycles
VIBRATION	IEC 60721-3-4	30 min/axis	-	Random 4M5
MECHANICAL SHOCK	IEC 60721-3-4	-	-	4M5
HUMIDITY	ETSI EN300-2-4 T4.1E	144 h	-	95%
WATER TIGHTNESS	IEC 529	-	-	IP64
SOLAR RADIATION	ASTM G53	1000 h	-	-
FLAMMABILITY	UL 94	-	-	Class HB
SALT SPRAY	IEC 68-2-11 Ka	500 h	-	-
ICE AND SNOW	-	-	-	25mm Radial
WIND SPEED SURVIVAL	-	-	-	220 Km/h
OPERATION	-	-	-	160 Km/h
WIND LOAD (SURVIVAL):	FRONT THRUST	-	-	80.2 kg
	SIDE THRUST	-	-	5.8 kg

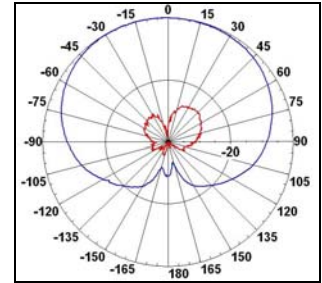
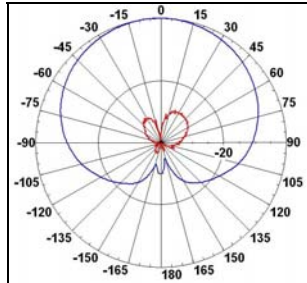
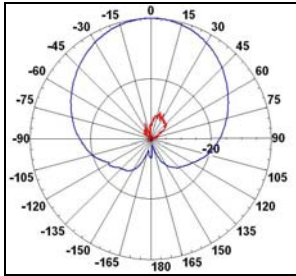
## 2.3-2.7GHz 16.6/15.5/14 dBi 60/90/120° BTS Adjustable

Azimuth Radiation Pattern - Midband Freq. 2.5 GHz

60°

90°

120°

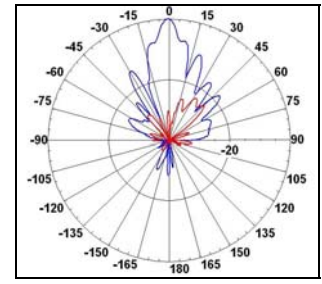
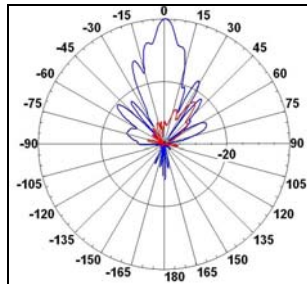
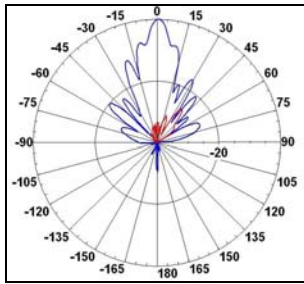


Elevation Radiation Pattern - Midband Freq. 2.5 GHz

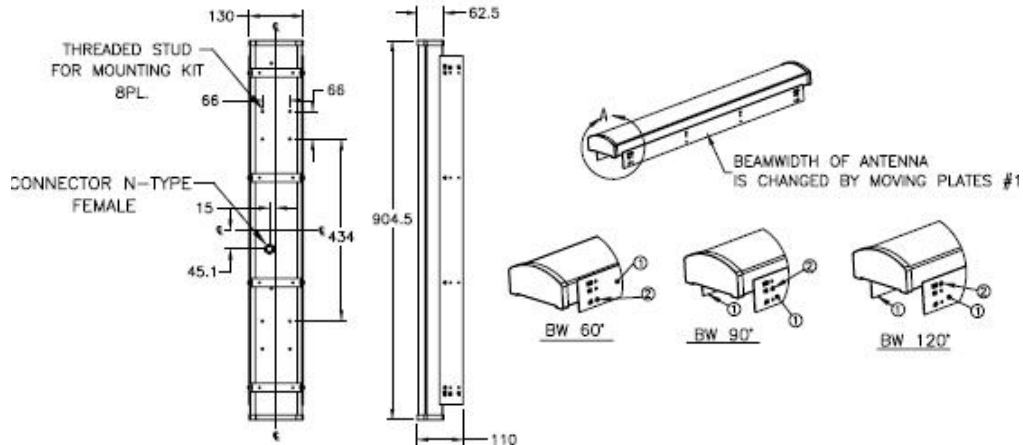
60°

90°

120°



Dimensions [mm]



MTI Wireless Edge is certified according to ISO 9001 and ISO 14001.

**WAIVER!**

While the information contained in this document has been carefully compiled to the best of our present knowledge, it is not intended as presentation or warranty of any kind on our part regarding the fitness of the products concerned for any particular use or purpose and neither shall any statement contained herein be construed as a recommendation to infringe any industrial property rights or as a license to use any such rights. The fitness of each product for any particular purpose must be checked beforehand with our specialists.

**MTI Wireless Edge Ltd.**

11 Hamelacha St.  
 Afek Industrial Park  
 Rosh Ha'ayin 48091, Israel  
 Tel: +972-3-9008900  
 Fax: +972-3-9008901  
[www.mtiwe.com](http://www.mtiwe.com)